

BPM Suite

The #1 BPM software for documenting, analyzing and improving processes, and laying the foundation for solving additional ETL, EAI, and B2Bi challenges.

Overview

Adeptia BPM Suite is a comprehensive solution that combines business process management with application and partner integration. It allows business users and IT staff to collaborate so as to automate and optimize complex business processes.

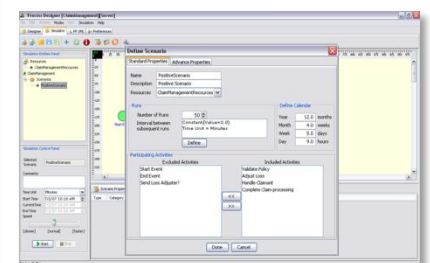
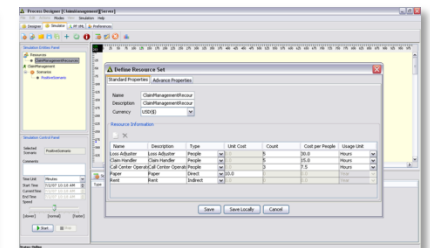
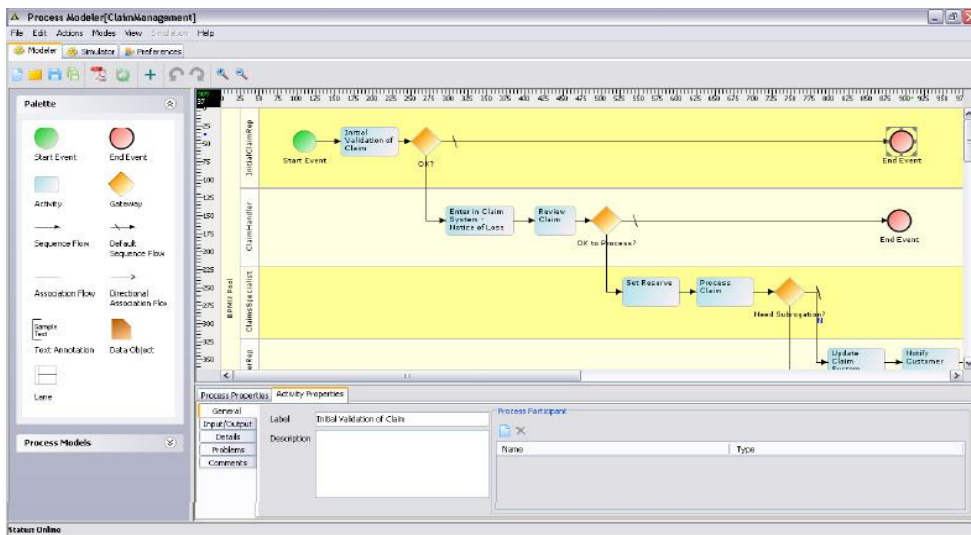
BPM Suite offers a powerful business tool for managers to document, analyze, control and monitor critical processes and then improve them. It also offers IT staff an easy and simple way to deliver highly complex process management for changing business needs. This enterprise-class software allows companies to leverage the Internet by deploying extended enterprise processes that link partners, suppliers and customers.

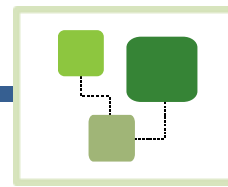
Benefits

- Document and formalize business processes, tasks & rules
- Enforce business decisions by specifying them in processes
- Ensure processes are constant and repetitive, not ad-hoc
- Track tasks, monitor performance, & optimize performance
- Shorten process lifecycles & seamlessly manage exceptions
- Accelerate return on investment by realizing significant cost savings on integration projects
- Leverage technology investments by extending functionality of existing systems
- Generate new revenue opportunities by bringing products and services to market faster than competitors

Key Features

- Business managers can document, model and simulate process flows and hand them-off to IT for automation
- Business users can utilize workflow capabilities to interact with processes, view business information and make decisions all via a web-browser
- Web-based, intuitive interface allows for increased productivity with minimal training. Offers an integrated composition environment.
- Comprehensive web services capabilities
- Full-featured integration functionality for the enterprise includes message transport, data transformation and transaction scheduling
- Object-based architecture promotes reusable components and functionality across disparate custom, packaged and legacy applications
- Complete management, reporting and auditing capabilities to track and monitor transactions
- Fully standards-based solution, using XML and J2EE





Process Modeler

Aptedia BPM software includes a completely web-based Process Modeler that is ideal for business users and analysts to use for documenting and defining your business processes and rules. It includes support for swim-lanes and assists in process discovery by prompting users to think thru and identify process rules, parameters, priorities, and exceptions etc. The modeled process can be exported into PDF document for archival and sharing.

Process Simulation

Process Modeler supports powerful simulation capabilities to do both cost-based and timing-based analysis of the “as-is” and “to-be” processes. Reports are included that help compare scenarios and identify bottlenecks.

Process Designer

For implementation, Process Designer offers a graphical process design and modeling interface. Process models created in the modeler can be handed-off to IT staff who utilize this simple to use, drag and drop interface for quickly designing process and data flows and to implement business rules. Developers directly implement these processes for execution by creating and populating each service task in the process flow. Process Modeler & Designer utilize BPMN standards based notation.

Process Engine

Aptedia BPM solution includes a powerful, full-featured engine for automated process execution. Its support for decision nodes, sub processes, exception handling, forks and joins, loops and long running transactions allows execution of process flows of almost any complexity. It also supports failure recovery as well as a job queue and clustering for reliability and high performance. Both real-time and batch events are available to trigger flows.

Web Services

Comprehensive support for Web Services includes ability to utilize any Web Service as a task in a process flow. This includes support for introspection of UDDI/WSDL and both RPC and message-style invocation. Process flows can be triggered by and even exposed as Web Services by using the Publish-WS capability of the product. Includes support for WS-Security.

Integration and Data Transformation

Powerful data integration capability includes support for complex data formats and transformation. Data transformation engine allows any-to-any mapping between different data formats. Complex data processing functions are included such as string, math, and conditional operations as well as DB and XML file look-up. Data can be aggregated from multiple sources and brought into the process flow & also sent to various applications.



Forms

BPM Suite includes support for rich forms that can be created very easily without writing any code. Dynamic, AJAX based forms are also offered which include support for instantaneous validations, sophisticated layouts and dynamic behavior. These forms can be used either to trigger business processes or as workflow tasks in running flows.

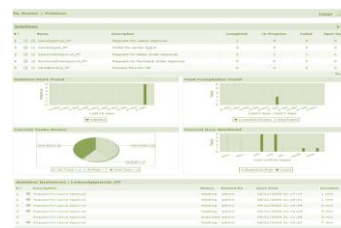
Human Workflow

Aptedia Business Process Management (BPM) software allows deploying of process flows that include tasks where human decisions are needed. When an action is required business users are alerted via email and on the Task Manager. Users interact via a web-interface with the process flow to complete their tasks. These actions may require manual intervention to resolve exceptions, review of business data to make decisions, and download/upload of documents.

Dashboard, Reporting and Optimization

BPM Suite includes a dashboard and reporting engine which are wizard-driven to enable quick design of real-time metrics boards and reports.

BPMS saves all logs and process data in a database for archival. Pre-built reports are included that allow analysis of run-time process metrics to review performance of processes and identify resource or personnel bottlenecks. Fixing these constraints can significantly optimize processes, resulting in cost savings, improved operational efficiencies and can lead to strategic business advantage.



Collaboration Environment

In an industry first, Aptedia BPM Suite is a completely web-based solution that facilitates process collaboration between business analysts, users and IT developers. This Services Oriented Architecture (SOA) based solution increases reusability and reduces implementation time.

System Requirements

Operating Systems: Windows, Linux, Solaris

Database: Embedded DB included. Commercial RDBMS recommended for production environments.

CPU: Intel® Pentium III 1 GHz or above or compatible

RAM: 1GB minimum, 8GB recommended

Java: J2SE v1.5 SDK

